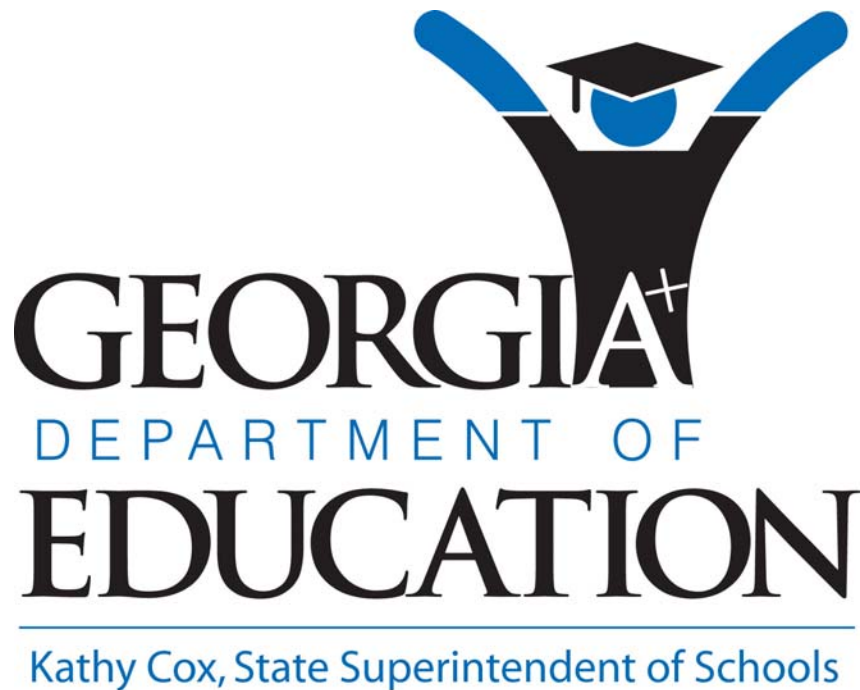


2007-2008
Georgia Special Needs
Scholarship (GSNS)
Summary Information



November 5, 2007

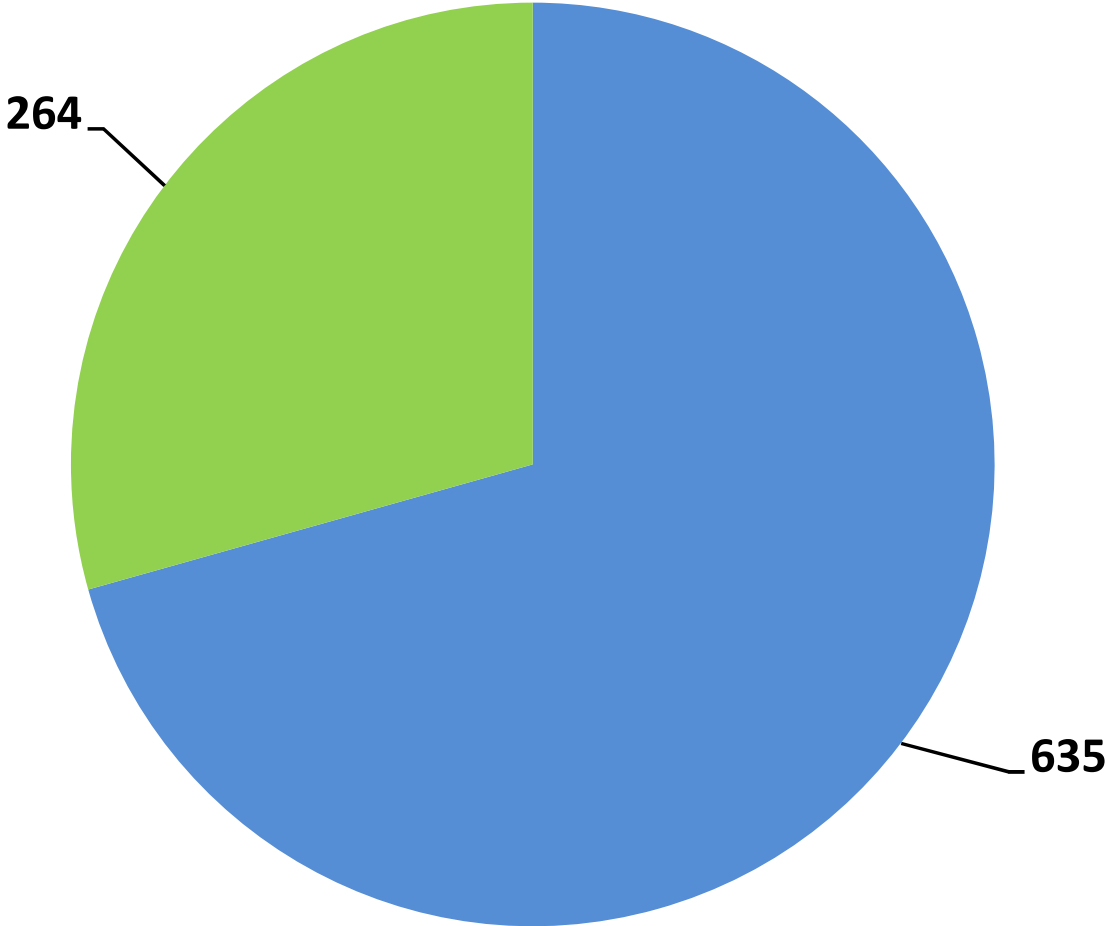
GSNS Student Enrollent Highlights

Description	Value
Public School Students Eligible for GSNS Scholarship Statewide	199,509
Total # of Private Schools Participating in GSNS for 2007-2008	117
Total # of Private Schools with enrolled Scholarship Students	115
Number of Private Schools with 10 or More Students	33
Number of Private Schools with 10 or Less Students	82
Total # of Students Receiving Scholarships	899
Median # of Scholarship Students Per School	4.5
Average # of Scholarship Students Per School	8.7
Range of Student Enrollment for the 117 Participating Private Schools	0-42
Georgia Public School Systems Impacted by Scholarship Student Withdrawals	62 of 184
Range of Special Need Scholarship Withdrawals in Georgia Public School Systems	1-122

Financial Information	Value
Statewide Annual Allocation Amount for Scholarship Recipients for 2007-2008	\$5,639,648
Total Scholarship Payments Statewide -- First Quarter 2007-2008	\$1,363,783
Range of Annual Scholarship Amounts for the 899 Scholarship Recipients	\$2,536 to 15,324
Median Scholarship Payment for the 899 students	\$6,088
Average Annual Scholarship Amount for the 899	\$6,273

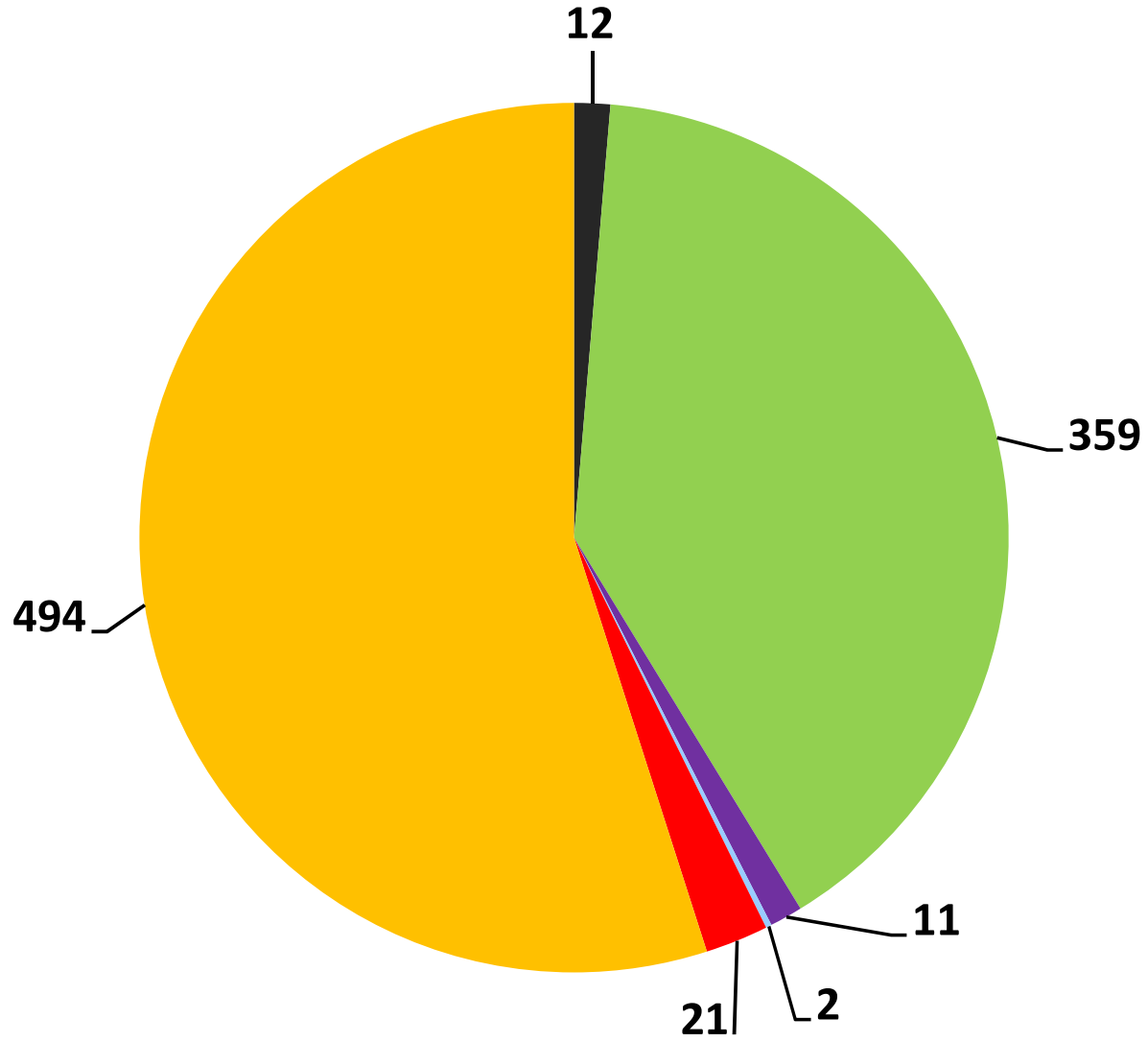
GSNS Students by Gender

Male Female

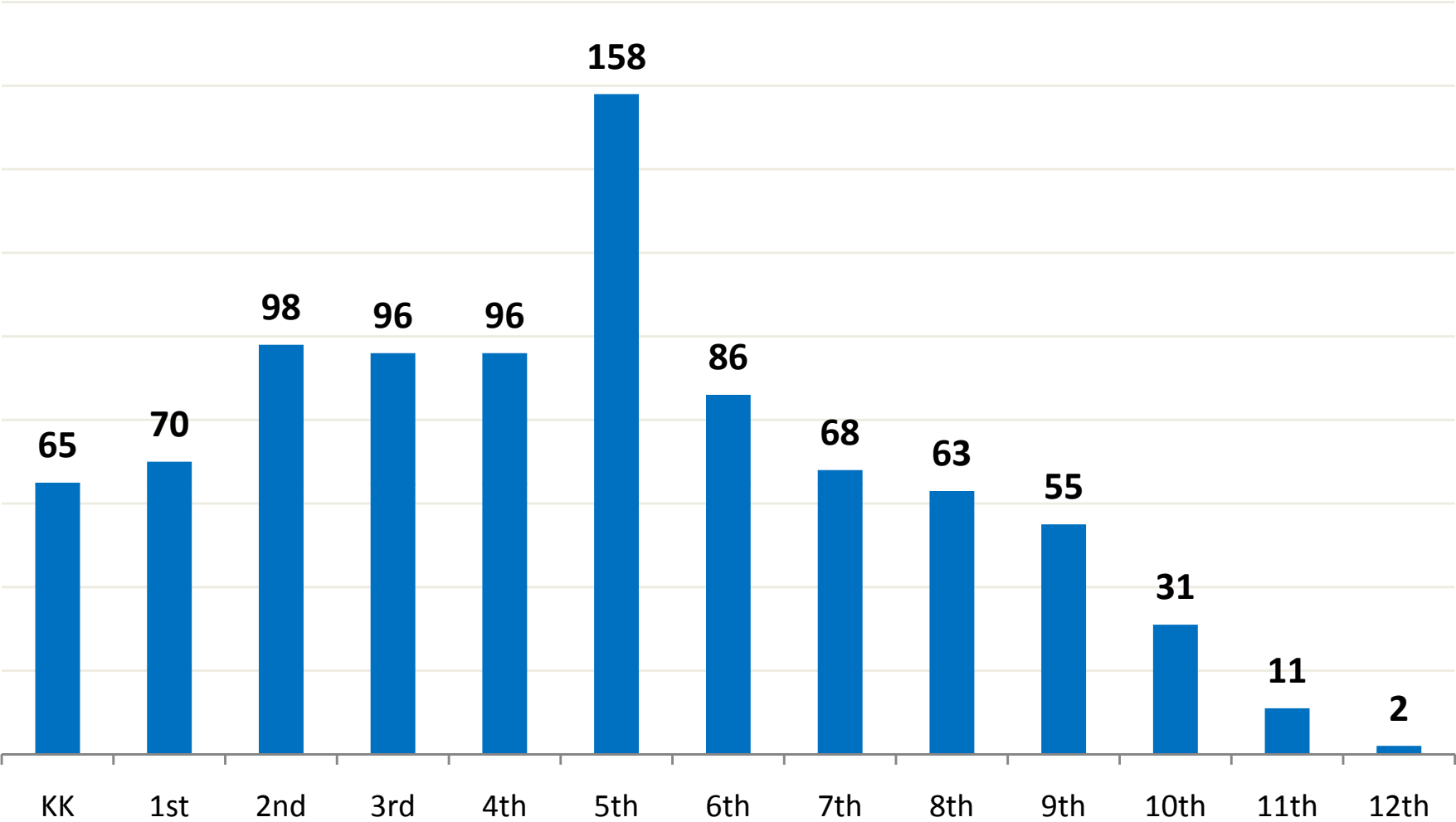


GSNS Students by Race & Ethnicity

■ Asian ■ Black ■ Hispanic ■ Native-American ■ Multi-racial ■ White



GSNS Students by Grade (2006-2007)



**Georgia Special Needs Scholarship
2007-2008 Student Counts, by System of Origin**

System of Origin	Count
Atlanta Public Schools County	39
Baldwin County County	3
Banks County County	1
Bartow County County	3
Bibb County County	15
Bryan County County	3
Butts County County	1
Camden County County	5
Candler County County	2
Carroll County County	10
Carrollton City County	2
Chatham County County	36
Cherokee County County	31
Clarke County County	1
Clayton County County	57
Cobb County County	98
Coffee County County	2
Columbia County County	6
Commerce City County	1
Cook County County	1
Coweta County County	12
Crisp County County	1
Decatur City County	3
DeKalb County County	111
Dougherty County County	1
Douglas County County	4
Effingham County County	3
Fayette County County	46
Floyd County County	1
Forsyth County County	34
Fulton County County	122
Gwinnett County County	88
Habersham County County	3
Hall County County	6
Harris County County	3
Henry County County	33
Houston County County	5
Jefferson City County	1
Jones County County	3
Lamar County County	3

**Georgia Special Needs Scholarship
2007-2008 Student Counts, by System of Origin**

System of Origin	Count
Lee County County	2
Liberty County County	1
Marietta City County	1
Marion County County	2
Meriwether County County	2
Monroe County County	2
Muscogee County County	1
Newton County County	12
Paulding County County	14
Peach County County	1
Polk County County	3
Richmond County County	16
Rockdale County County	6
Social Circle City County	1
Spalding County County	14
Thomaston-Upson County County	1
Troup County County	11
Walker County County	1
Walton County County	4
White County County	1
Whitfield County County	2
Wilkinson County County	1
Total	899

**2007-2008 Georgia Special Needs Scholarship
Private School Enrollment**

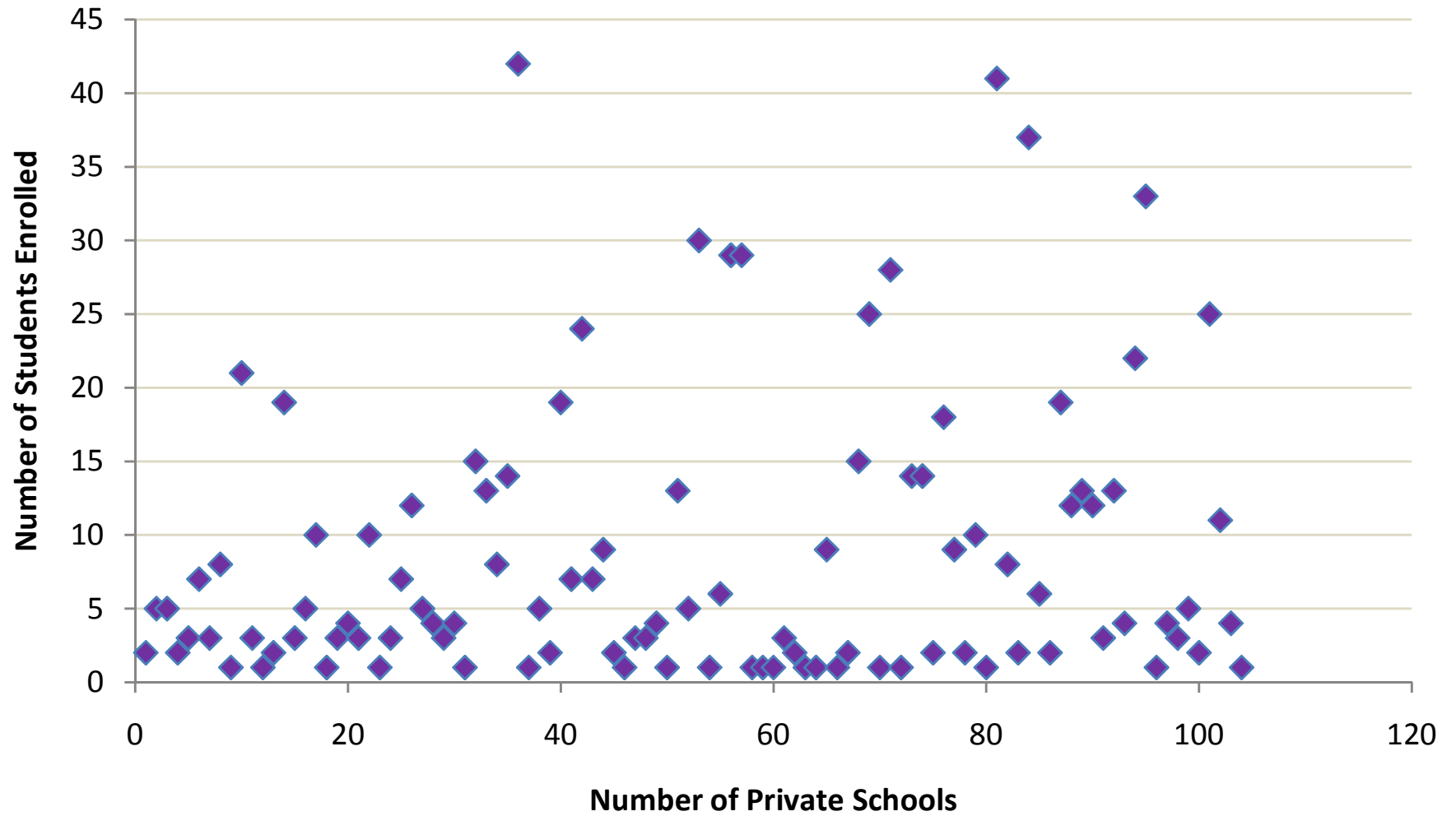
School Name	Count
ADVANCE Academy	*
Advance Learning Center	*
Amit, Inc.	*
Anointed Word Christian Schools International	*
Atlanta Speech School	*
Aurora Strategies	*
Ava White Academy	*
Bible Baptist Christian School	*
Blessed Sacrament School	*
Branch Christian Community School	21
Brandon Hall	*
Brunswick Chrisitan Academy	*
Central Fellowship Christian Academy	*
Chatham Academy at Royce	19
Christian Heritage School	*
Chrysalis Experiential Academy, Inc.	*
Clara Mohammed Elementary and W. Deen Mohammed High School	10
Community Christian Academy (formally Cornerstone Christian Academy)	*
Community Christian School	*
Cornerstone Community Services Learning Academy	*
Cornerstone Preparatory Academy	*
Cornerstone Schools	10
Covenant Christian Academy	*
Cumberland Academy at Sandy Springs	*
Cumberland Academy dba Gables Academy	*
Dawson Street Christian School	12
Decatur Adventist Junior Academy	*
Dominion Christian High School	*
Eagle's Landing Christian Academy	*
Eaton Academy, Inc.	*
Emory Christian School	*
Faith Christian Academy	15
Fayette Christian School	13
Focus Learning & Enrichment Academy	*
Footprints Christian Academy	14
Frederick J.Furtah Preparatory School	42
Fullington Academy	*
Heart of Hope Academy for Children with Special Needs	*
Holy Spirit Preparatory School	*
Hope Christian School of Augusta	19
Hope Schools of Excellence	*
Hopewell Christiam Academy	24
Horizon Christian Academy	*
Horizons School	*
Jacob's Ladder	*
John Hancock Academy	*
Kaleidoscope Applied Behavior Analysis, Inc.	*
Katherine and Jacob Greenfield Hebrew Academy of Atlanta	*
Kingfisher Academy	*
LaGrange Academy	*
Lakeside Preparatory School	13
Lighthouse Christian Academy	*
Lyon Academy Inc. DBA Solid Rock Academy	30
McGinnis Woods Country Day School	*

GaDOE does not report student information below 10 students to protect individual students from being identified in compliance with federal law -- the Family Education Privacy Act (FERPA).

**2007-2008 Georgia Special Needs Scholarship
Private School Enrollment**

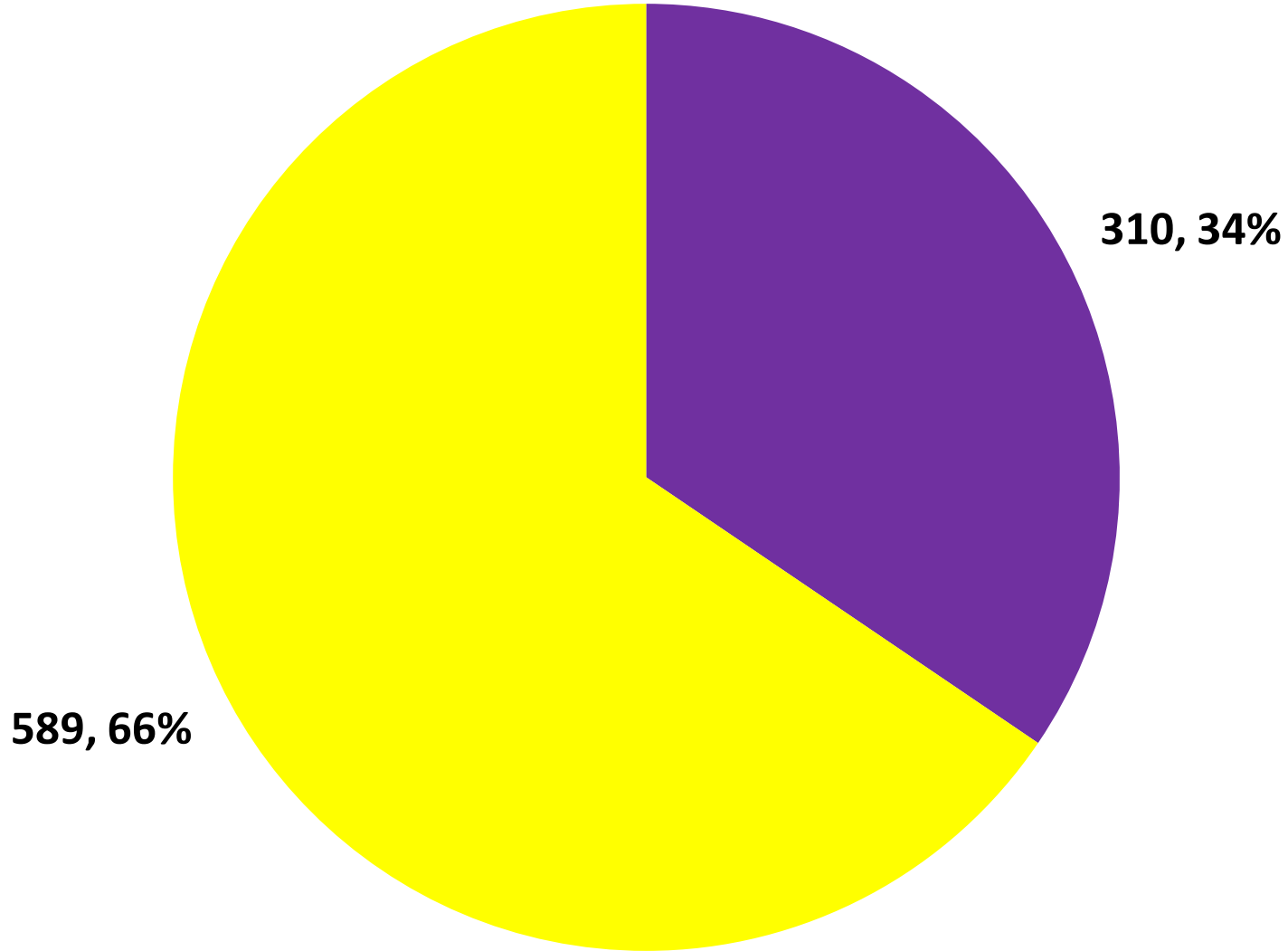
School Name	Count
Memorial Day School	*
Mill Springs Academy	29
Miller's Preparatory Academy for Boys	29
Montessori Community School, Inc. d/b/a Counterpane	*
Mount de Sales Academy	*
Mount Paran Christian School	*
Oasis Learning Center	*
Ombudsman Educational Services at College Living Prep	*
Our Lady of Mercy Catholic High School	*
Paideia School	*
Pathways Academy	*
Peachtree Academy Private School	*
Perimeter Christian School (PCS)	*
Porter Academy	15
Rock Solid Foundations Christian Academy	25
Saint Catherine of Siena Catholic School	*
Saint Francis Day School	28
Sherwood Christian Academy	*
Sophia Academy	14
Special Needs Schools of Gwinnett, Inc.	14
St. Joseph Catholic School	*
St. Paul Academy	18
St. Peter Claver Regional Catholic School	*
St. Teresa's School	*
Stepping Stones Educational Therapy Center, Inc.	10
The Bedford School, Inc.	42
The Campus	*
The Community School	*
The Cottage School	37
The Friends School of Atlanta	*
The Hirsch Academy	*
The Howard School	19
The Joseph Sams School	12
Brookwood Christian Language School	13
The Lighthouse	12
The Lionheart School	*
The Owens Academy For Exceptional Learners	13
The Ron Clark Academy	*
The Schenck School	22
The Swift School	33
Torah Day School of Atlanta	*
Trinity Chapel Academy	*
Vineyard Harvester Christian Academy	*
Waverly Hall Christian Academy	*
Westminster Schools of Augusta	*
Woodfield Academy	25
Woodlee's Christian Academy	11
Woodward Academy	*
Yeshiva Atlanta High School	*
Total	899

Private School Enrollment Distribution, 2007-2008



Free & Reduced Lunch Eligibility

■ Eligible ■ Not Eligible



Scholarship Participants by Disability

